

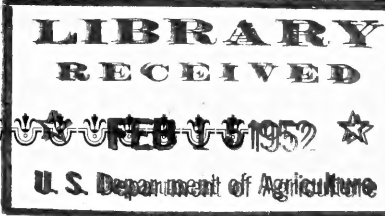
## **Historic, Archive Document**

Do not assume content reflects current scientific knowledge, policies, or practices.



62.89

de



# Wholesale Price List

SPRING — 1952

## The Tankard Nurseries

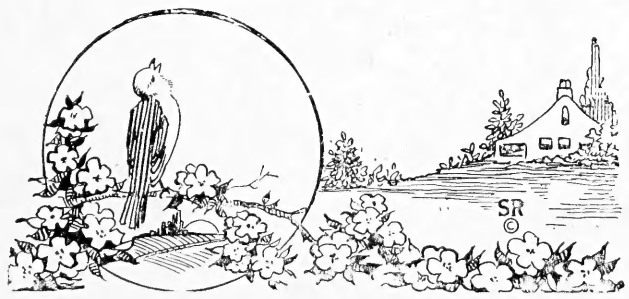
Exmore, Virginia

SPECIALIZING IN

Azaleas

Broad Leaved Evergreens

General Ornamentals



# Members

VIRGINIA NURSERYMEN'S ASSOCIATION  
SOUTHERN NURSERYMEN'S ASSOCIATION  
AMERICAN ASSOCIATION OF NURSERYMEN

## THE TANKARD NURSERIES Exmore, Virginia

L. D. TELEPHONE: Office-Belle Haven 2-6211

J. E. TANKARD: Belle Haven 2-2889

S. D. TANKARD, Jr.: Belle Haven 2-3244

Located on the Famous

## EASTERN SHORE of VIRGINIA

Where "Heaven and Earth Meet" in the words of Capt. John Smith who described this land as the best suited for man's habitation of any of the many places he had been.

We can well add that because of its level terrain, loamy soil, delightful climate, and nearness to the great Eastern markets, it is the best suited land we have ever seen for growing Fine Nursery Stock.

Far enough North to grow most of the Northern plant material; and yet tempered by the waters of Chesapeake Bay on the West and those of the Gulf Stream of the Atlantic on the East. The Southern materials, including many of the Camellias, also thrive here. We are 200 miles South of Philadelphia on the Pennsylvania Railway and Ocean Highway U. S. No. 13; and 50 miles North of Norfolk with which we are connected by a fast truck carrying ferry system running on a 90 minute schedule to and from near Cape Charles on the Eastern Shore of the Chesapeake and the Southern tip of the Del-Mar-Va Peninsula.

The Eastern Shore and the Del-Mar-Va Peninsula have become a great nursery center. Come and find all your wants.

## WHOLESALE PRICE LIST

### SPRING — 1952

Within easy trucking distance of Eastern points, but we can ship anywhere by express, freight, or truckload.

We have customers in 17 states - from Mass. to Oklahoma, and have received many compliments on our plants and our packing.

**Terms and Conditions:-** Prices are F. O. B. Exmore, Virginia, packing in boxes and bales additional, subject to prior sale, and our confirmation of the order. Terms are cash with order, or 1-4 cash with order, balance C. O. D., unless credit has been established with us.

50 plants at 100 rate; 500 at 1000 rate.

WE CAN DIG AND SHIP ALMOST ANY WEEK DURING THE WINTER, SPRING OR FALL. However, we advise you to let us have your order at once so we may reserve stock for you. Many items listed are scarce this season.

We box Azaleas and pack deciduous stock for L. C. L. shipment by Rail and to some destinations by Truck lines, but cannot undertake to box and ship larger evergreens. These are offered only for bulk shipment by truck or car load.

## AZALEAS

We grow many thousands of beautiful plants, dense, and bushy. These are the finest Azalea plants we have ever raised. Grown in natural Azalea soil in the field, under full sun. Place your order now as there were not enough plants to meet the demand again last season, and sales have already taken the majority of this year's crop.

Buds have been damaged some during the winter, but this is confined to a portion of the top buds. This leaves them still good for landscape planting, and possibly acceptable for forcing.

Within easy trucking distance of Eastern points, but we can ship anywhere by express, freight, or truckload.

**For Azalea orders, 1000 rates apply on all orders for 500 or more plants for bulk (truck) shipment. 100 rates apply on all Azalea orders to be packed for shipment in boxes.**

**Only a few thousand left, mostly Hinodegira. Order at once and early for next season.**

## KURUME VARIETIES

**PRICES** Kurume and Pericat varieties, (\*\* except Hino-crimson which is 25c per plant additional).

Add 10c per plant if burlap wrapping is desired.

	Each Per 100	Each Per 1000
6- 8 in. spread .....	\$ .80	\$ .70
8-10 in. spread .....	1.10	.90
10-12 in. spread .....	1.35	1.15
12-15 in. spread .....	1.75	1.50
15-18 in. spread .....	2.50	2.00

**VARIETIES:** Note sizes available & those sold out below.

**AMOENA** — Hose-in-hose, rosy purple flowers. Very hardy, 12-15 in.

**BRIDESMAID** — Salmon-pink flowers in large clusters.  
**Sold Out**

**CHRISTMAS CHEER** — **Sold Out**

**CORAL BELLE** — Hose-in-hose deep pink. The favorite pink Azalea. Few 10-12 in.

**FLAME** — Hose-in-hose bright madder red. Tall grower.  
**Sold Out.**

**HEXE** — Hose-in-hose, large crimson-red. Late flowering - often at Mothers' Day. Very few left. 6-8 in to 10-12 in.

\*\* **HINO-CRIMSON** — New introduction, far superior to Hinodegiri because of its deep crimson color which does not fade. Hardiness equal to or surpassing Hinodegiri. **Sold Out.**

**HINODEGIRI** — Brilliant red. The standard hardy Azalea. 6-8 in. to 15-18.

**PINK PEARL** — Hose-in-hose light pink. Excellent foliage, vigorous. 8-10 in. to 12-15 in.

## AZALEAS, Continued

**SALMON BEAUTY** — Sold Out.

**SNOW** — Sold Out.

### INDICA AZALEAS

**FORMOSA** — Large purple flowers. Rapid grower where hardy. Most buds blasted, some leaf damage. 10-12 to 18-24 in.

**LEDIFOLIA (INDICA) ALBA** — Large white flowers, big and fast grower. **Sold Out.**

### KAEMPFERI HYBRID AZALEAS

These are large vigorous - growing azaleas recently developed to give the hardiness of Kaempferi in combination with the gorgeous large flowers of the other parent, Malvatica. They are truly outstanding. Semi-evergreen.

**CARMEN** — Rose-colored, large flowers. 15-18 in.

**ATALANTA** — **Sold Out.**

**MARY** — **Sold Out.**

**SIZES AND PRICES INDICA AND KAEMPFERI HYBRID AZALEAS**, balled, without burlapping, FOB Exmore, Va.

	Each Per 100	Each Per 1000
10-12 in. spread each .....	\$1.25	\$1.15
12-15 in. spread each .....	1.50	1.35
15-18 in. spread each .....	1.80	1.65
18-24 in. spread each .....	2.25	2.00

### Glenn Dale Hybrid Azaleas - Sold Out

## Broadleaved Evergreens

All first -class, dense, pruned plants with good color and good roots - properly dug and burlapped.

Each Per 10

**ABELIA grandiflora.**

18-24 in. ....	\$1.25
2-2½ ft. ....	1.65
2½-3 ft. ....	2.00

**AUCUBA aurea maculata. Golden Aucuba. Few.**

2-3 ft. slender .....	3.00
-----------------------	------

**AUCUBA japonica. Green Aucuba. Few.**

2-3 ft. slender .....	3.00
3-4 ft. slender .....	4.00

**BERBERIS julianae. Wintergreen Barberry.**

15-18 in. ....	2.00
1½-2 ft. ....	2.50

**BUXUS sempervirens. (Columnar form)**

15-18 in. ....	1.50
18-21 in. ....	2.25
21-24 in. ....	3.00

**EUONYMUS kiautschovicus, (Patens) "Carrieri" type with dark green leaves.**

1½-2 ft. breadth .....	1.25
2-2½ ft. breadth .....	1.75
2½-3 ft. breadth .....	2.25

**ILEX crenata rotundifolia.**

15-18 in. ....	2.00
----------------	------

**BROADLEAF EVERGREENS, Continued**

Each Per 10

<b>ILEX cornuta burfordi.</b> Burford Holly. Beautiful plants. Root pruned the past spring.	
1½-2 ft. ....	3.00
<b>JASMINUM floridum.</b> Summer flowering.	
2-3 ft. ....	1.50
3-4 ft. ....	2.00
<b>LAUROCERASUS caroliniana.</b> Limited Quantity.	
4-5 ft. ....	3.00
5-6 ft. ....	4.50
6-7 ft. ....	6.00
7-8 ft. ....	7.50
8-9 ft. ....	10.00
<b>LIGUSTRUM japonicum.</b> Tall grower.	
3-4 ft. ....	1.50
4-5ft. ....	2.00
5-6 ft. ....	2.50
<b>LIGUSTRUM lucidum.</b>	
2-2½ ft. ....	2.25
2½-3 ft. ....	2.75
3-3½ ft. ....	3.25
<b>LIGUSTRUM lucidum, spreading type.</b> Loose-growing, long branches.	
1½-2 ft. spread ....	1.00
2-2½ ft. spread ....	1.50
2½-3 ft. spread ....	2.00
<b>LIGUSTRUM lucidum nobilis.</b> Erect growing type with very dark green leaves of large size.	
2-2½ ft. ....	2.25
2½-3 ft. ....	2.75
<b>LIGUSTRUM lucidum recurvifolium.</b> Darker green leaves with curved margins.	
2-2½ ft. few ....	2.50
<b>NANDINA domestica.</b>	
18-24 in. 2 to 3 canes ....	1.50
2-2½ ft. 2 to 3 canes ....	1.75
2½-3 ft. 3 to 4 canes ....	2.25
2-2½ ft. heavy select ....	2.75
2½-3 ft. heavy select ....	3.25
<b>OSMANTHUS aquifolium.</b> (Illicifolium) Holly-leaf Osmanthus.	
2-2½ ft. ....	3.00
2½-3 ft. ....	3.50
3-3½ ft. ....	4.00
<b>PYRACANTHA Graberi.</b> (Red berries) Root pruned.	
1½-2 ft. ....	2.50
2-3 ft. ....	3.50
<b>PYRACANTHA lalandi.</b> Upright growth. Root pruned.	
4-5 ft. ....	3.00
5-6 ft. ....	4.00
6-8 ft. few ....	5.00
<b>PYRACANTHA yunnanensis.</b> Root pruned.	
Heavy cut back plants.	
2½-3 ft. ....	3.50
3-3½ ft. breadth ....	4.50
3½-4 ft. breath ....	6.50

DuBois, Penna., Nov. 1950, .... "These (Azaleas) arrived in excellent condition. Very fine plants. Thank you."

Covington, Ky., April, 1951, .... "Azaleas arrived yesterday and the packing was excellent. They are nice plants and they were in good condition. Thanks."

## CONIFEROUS EVERGREENS

All Conifers pruned and/or sheared, with excellent form and color.

Each Per 10

**CEDRUS deodara.**

3-4 ft. .... 4.00

**CHAMAECYPARIS filifera. Thread-branched Cypress. Heavy sheared plants. Few.**

2-2½ ft. .... 2.50

**CHAMAECYPARIS plumosa. Plume Cypress.**

2-2½ ft. x 2-2½ ft. .... 3.00

2½-3 ft. extra choice .... 3.75

**CHAMAECYPARIS squarrosa veitchi nana. Dwarf cushion Silver Cypress.**

18-21 in. x 18-21 in. .... 3.00

**JUNIPERUS excelsa stricta.**

15-18 in. .... 1.50

18-24 in. .... 2.00

**JUNIPERUS Hetzi. (Blue Pfitzer) A very beautiful new spreading juniper similar to Pfitzer, but superior to it in its interesting bluish color, more shapely natural growth, and more rapid development.**

2-2½ ft. .... 3.00

2½-3 ft. .... 3.50

**JUNIPERUS hibernica. Irish Juniper. Dense sheared specimens Fastigiata variety.**

2½-3 ft. .... 2.50

**JUNIPERUS chinensis pfitzeriana. Pfitzer Juniper.**

1½-2 ft. few .... 2.50

2-2½ ft. .... 3.00

2½-3 ft. few .... 3.50

3-4 ft. few .... 4.50

**JUNIPERUS virginiana Burki. Silver Juniper. Limited quantity.**

3½-4 ft. few .... 4.00

4-5 ft. few .... 5.00

**JUNIPERUS virginiana Canaerti.**

2½-3 ft. slender .... 2.75

4-4½ ft. .... 4.50

**PICEA pungens. Colorado Spruce.**

18-24 in. .... 2.00

2-2½ ft. .... 2.50

2½-3 ft. .... 3.00

**PICEA rubra. Red Spruce.**

2-2½ ft. .... 1.75

**PINUS strobus. White Pine. Few.**

3-4 ft. fine plants .... 4.00

**TAXUS baccata hibernica. Irish Yew.**

1½-2 ft. .... 4.00

2-2½ ft. .... 5.00



---

**CONIFEROUS EVERGREENS, Continued**

Each Per 10

<b>TAXUS vermeulen. (Upright-columnar)</b>	
2-2½ ft. few .....	3.50
<b>THUJA occidentalis globosa.</b>	
15-18 in. ....	1.75
18-21 in. few .....	2.25
<b>THUJA occidentalis pyramidalis.</b>	
2½-3 ft. ....	2.50
<b>THUJA (Biota) aurea nana globosa. Berckmann's Golden Globe.</b>	
15-18 in. ....	2.00
18-21 in. few .....	2.75
<b>THUJA or. (Biota) bonita.</b>	
15-18 in. few .....	2.00
18-24 in. few .....	2.75

---

## FLOWERING SHRUBS

Our flowering shrubs are all nice young, vigorous, and heavy stock - including the larger sizes. No old overgrown stuff in Tankard Nurseries.

All will be freshly dug to fill your order.

50 or more of one kind and grade at 100 rate

	Each Per 10	Each Per 100
<b>CYDONIA japonica. True upright type.</b>		
2-3 ft. ....	.60	.50
3-4 ft. ....	.75	.60
<b>DEUTZIA Pride of Rochester.</b>		
2-3 ft. ....	.30	
<b>FORSYTHIA spectabilis.</b>		
2-3 ft. ....	.35	.30
3-4 ft. ....	.45	.40
<b>FORSYTHIA suspensa.</b>		
2-3 ft. ....	.40	
<b>HIBISCUS syriacus. Althea. (Rose of Sharon).</b>		
<b>Anemonæflorus.</b> Double deep pink.		
<b>Ardens.</b> Double violet.		
<b>DUCHESS de Brabant.</b> Double red.		
<b>Jeanne d'Arc.</b> Double white.		
2-3 ft. ....	.35	.30
3-4 ft. few .....	.45	.40
<b>HYDRANGEA paniculata grandiflora. Pee gee Hydrangea.</b>		
1½-2 ft. ....	.45	
2-3 ft. ....	.60	
<b>JASMINUM primulinum. Primrose Jasmine.</b>		
4-5 ft. B&B .....	1.50	
5-6 ft. B&B .....	2.00	
<b>KOLKWTZIA amabilis. Beauty Bush.</b>		
1½-2 ft. ....	.45	.40
2-3 ft. ....	.55	.50
3-4 ft. heavy .....	.70	.60
<b>LAGERSTROEMIA indica. (Crepe Myrtle) Watermelon Red.</b>		
Use Virginia grown Crepe Myrtles for increased hardiness		
2-3 ft. ....	.60	.50

---

**FLOWERING SHRUBS, Continued**

	Each Per 10	Each Per 100
<b>LONICERA tatarica zabeli.</b> Zabel's Red Flowering Bush Honeysuckle. The best red Tatarian.		
2-3 ft. ....	.35	
<b>PHILADELPHUS coronarius.</b> Sweet Mockorange.		
2-3 ft. ....	.30	.25
3-4 ft. ....	.40	.35
4-5 ft. ....	.50	.45
5-6 ft. ....	.75	.60
<b>PHILADELPHUS virginalis.</b> Double Mockorange. Blooms all summer.		
2-3 ft. ....	.55	
3-4 ft. ....	.75	
<b>SPIRAEA thunbergi.</b>		
2-3 ft. heavy ....	.40	.35
3-4 ft. heavy ....	.60	.50
<b>SPIRAEA van houttei.</b>		
2-3 ft. standard grade ....	.25	.20
2-3 ft. heavy ....	.30	.25
3-4 ft. heavy ....	.40	.35
4-5 ft. heavy ....	.65	.60
<b>SYRINGA chinensis. (rothomagensis)</b> Chinese Lilac.		
2-3 ft. ....	.45	
3-4 ft. ....	.75	
<b>SYRINGA.</b> French Hybrid Lilac. Michel Buchner -double, lilac flowers. few.		
1½-2 ft. heavy ....	.55	
2-3 ft. ....	.70	
<b>VITEX macrophylla.</b> An improved variety with lovely foliage and long dark spikes of flowers.		
2-3 ft. ....	.40	.35
3-4 ft. heavy ....	.50	.40
4-5 ft. heavy ....	.75	.60
5-6 ft. heavy ....	.90	.80
<b>WEIGELIA Eva Rathke.</b> Deep red.		
18-24 in. hvy. ....	.40	.35
2-3 ft. hvy. ....	.50	.45
3-4 ft. hvy. ....	.85	.70
<b>WEIGELIA rosea.</b> Pink Weigelia.		
2-3 ft. ....	.35	.30
3-4 ft. heavy ....	.55	.45
4-5 ft. heavy ....	.90	.75

---

**FLOWERING TREES**

	Each Per 10
<b>CERCIS canadensis.</b> Red Bud. (Judas Tree).	
3-4 ft. ....	.60
4-5 ft. ....	.80
5-6 ft. ....	1.00
6-8 ft. ....	1.50
8-10 ft. few ....	3.00
(Add 50% to above prices for B&B)	

## FLOWERING TREES, Continued

Each Per 10

### CORNUS florida. White Dogwood. Extra nice trees. Heavy caliber, broad heads.

4-5 ft. b. r. - 2.00, B&B - .....	2.75
5-6 ft. B&B .....	3.75
6-7 ft. B&B .....	4.75
7-8 ft. B&B .....	6.00

### CORNUS florida rubra. Pink Dogwood. Well formed trees.

3½-4 ft. B&B .....	3.50
4-4½ ft. B&B .....	4.50
4½-5 ft. B&B .....	5.50
12-14 ft. B&B, 50.00 to 75.00 ea.	

**MALUS - Flowering Crabapple. Flowering Crabs are one of our specialties. We have choice varieties and extra nice trees, all well branched.**

#### VARIETIES and SIZES:

**ATROSANGUINEA** (Carmine) Single red flowers in abundance. few 4-5 ft. and 5-6 ft.

**ELEYI.** Red flowers, red foliage, and large red fruit borne on vigorous trees. 4-5 ft. and 5-6 ft.

**FLORIBUNDA.** Single pink flowers. Few 4-5 ft., and 5-6 ft.

**MALUS** (continued)

**HOPA.** Red foliage, red flowers, and red fruit. Narrow, erect growing tree. 4-5 ft. and 5-6 ft.

**SPECTABILIS.** Very showy pink flowers. 4-5 ft. and 5-6 ft.

#### PRICES, ABOVE VARIETIES:

4-5 ft. b. r. ....	.90, B&B 1.25
5-6 ft. b. r. ....	1.25, B&B 1.75

**A few trees larger than indicated, quoted on request.**

**MALUS. Fruiting Apple. Heavy, well branch trees, transplanted two years ago. Especially good for landscape and home planting.**

**VARIETIES:** Yellow Transparent, Red Delicious, Lodi, Black Stayman, Double Red Delicious, Yellow Delicious, Golden Bough, and Horse.

#### PRICES:

6-8 ft. 1¼-1½ in. cal .....	1.50
\$125.00 per 100	
8-10 ft. 1½-2 in. cal. ....	2.00
\$150.00 per 100	

**PRUNUS serrulata Kwanzan. Pink upright double flowering cherry.**

4-5 ft. ....	2.75 ea.
--------------	----------

**PRUNUS subhirtella pendula. Weeping Japanese Cheery. Number 1 heads. Only 25 trees left unsold.**

5-6 ft. budded on standards, single and double double varieties, .....	4.75 ea.
--	----------

Narberth, Pa., January 9, 1952. "The Burford hollies that we got from you were so nice that I am sure we shall be in the market for more in the spring."

## SHADE TREES

Each Per 10

**ACER platanoides.** Norway Maple. A few straight trees. Also a number of crooked and somewhat crooked trees quoted on request, the later at bargain prices.

**ACER rubrum.** Red or Swamp Maple. Limited number of trees lacking in uniformity and straightness, quoted on request.

**ACER saccharum.** Sugar or Hard Maple.

Few 8-10 ft. 1-1 $\frac{1}{4}$  in. cal. .... 2.50  
 Few 10-12 ft. 1 $\frac{1}{4}$ -1 $\frac{1}{2}$  in. cal. .... 3.25

**QUERCUS palustris.** Pin Oak. Limited quantity.

10 trees - 8-10 ft. 1 $\frac{1}{2}$ -1 $\frac{3}{4}$  in. cal. B&B ..... 6.00  
 10 trees - 8-10 ft. 1 $\frac{3}{4}$ -2 cal. B&B ..... 7.50  
 Few trees - 11-13 ft. 2 $\frac{1}{2}$ -3 in. cal. B&B ..... 20.00  
 Several Trees - 3-3 $\frac{1}{2}$  in. cal. B&B ..... 35.00

**QUERCUS phellos.** Willow Oak. Well formed trees. Limited quantity.

6-8 ft. 1 $\frac{1}{4}$ -1 $\frac{1}{2}$  in. cal. B&B ..... 4.75  
 8-10 ft. 1 $\frac{1}{2}$ -2 in. cal. B&B ..... 8.00  
 10-12 ft. 2-2 $\frac{1}{2}$  in. cal. B&B ..... 13.00

**QUERCUS rubra.** Red Oak. Few trees, quoted on request.

**SALIX babylonica.** Weeping Willow.

4-5 ft. 1 yr. branched ..... .50  
 4-5 ft. well branched - few ..... .75

**SALIX elegantissima.** Golden Bark Weeping Willow. Fine trees.

2-3 ft. 1 yr. liners ..... \$12.50 per 100  
 3-4 ft. 1 yr. liners ..... \$20.00 per 100

**ULMUS americana.** American Elm. Limited quantity, not too uniform, quoted on request.

## GRAPE VINES

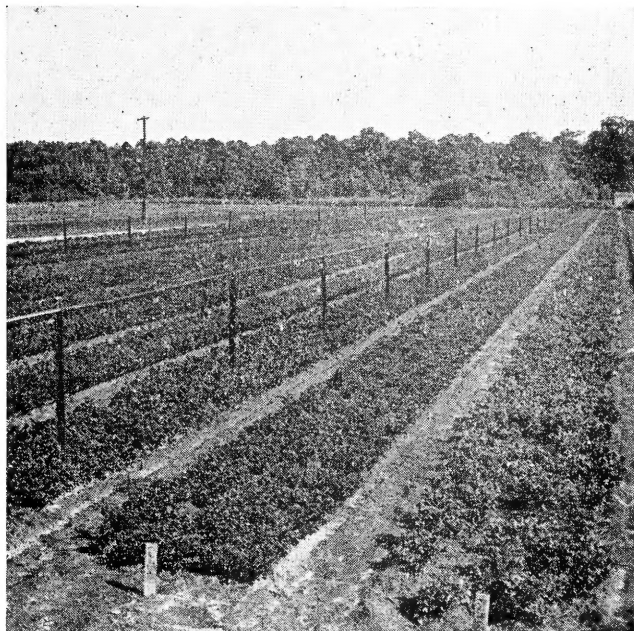
**CONCORD variety.**

4 yr. No. 1, extra fine bearing size ..... .30 ea.,  
 \$20.00 per 100.

## MEMORANDUM

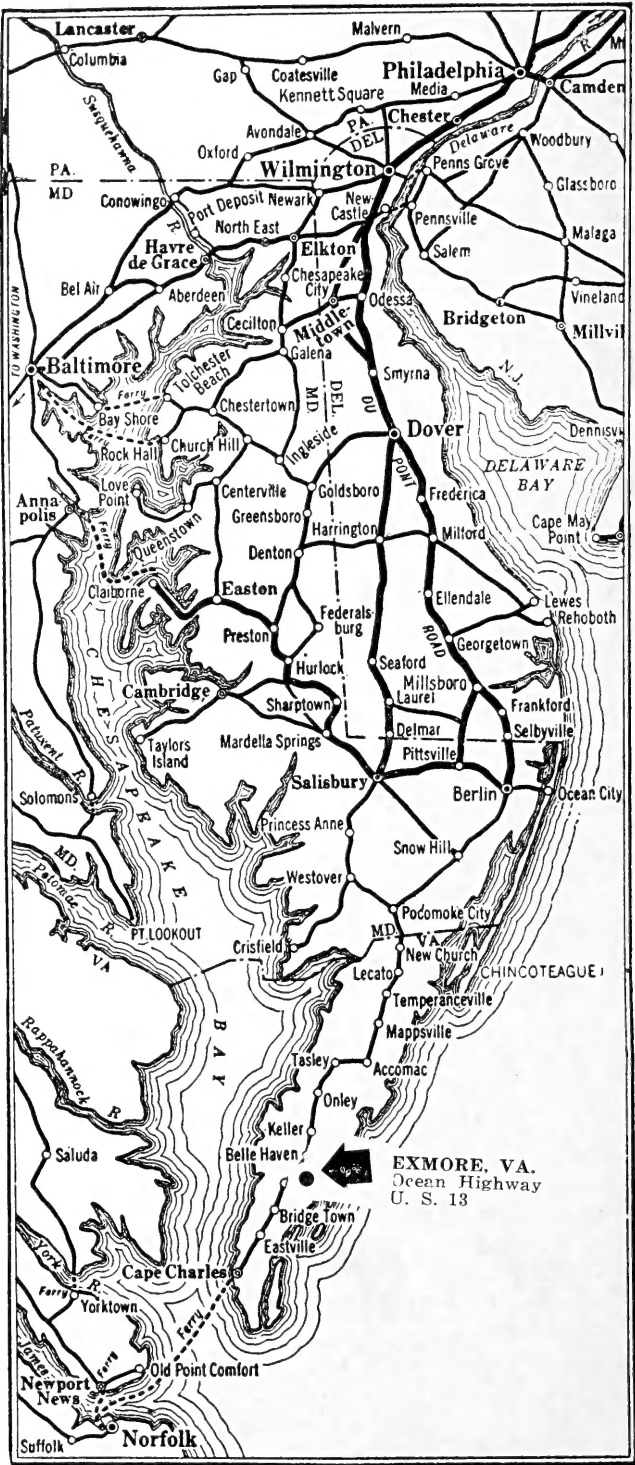


Below is a view of one of our Azalea fields.  
Come to visit our nursery.



**The Tankard Nurseries**  
On The Del-Mar-Va Peninsula  
Exmore, Virginia





Exmore, Va. is located on the Del-Mar-Va Peninsula. Readily reached by Highway U. S. 13, Pennsylvania Railway, Greyhound Bus; or Plane to Weirwood or Parksley; two hundred miles south of Philadelphia.

Connected with Norfolk by fast car and truck ferry, running every ninety minutes.